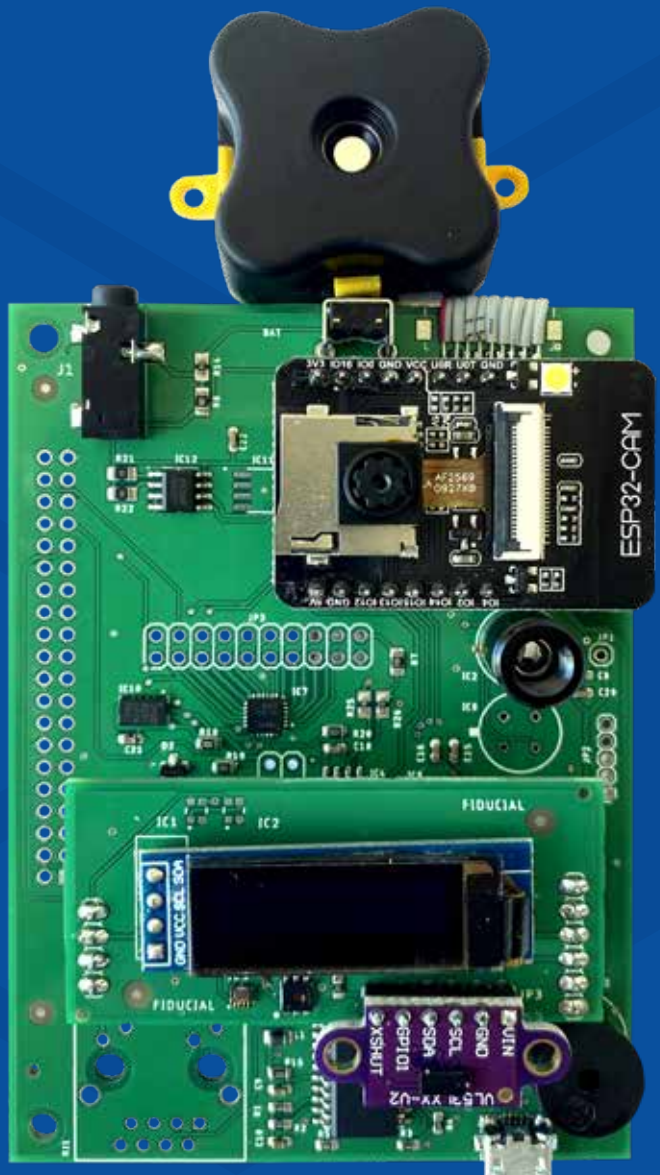


Multicast Mote

DATASHEET



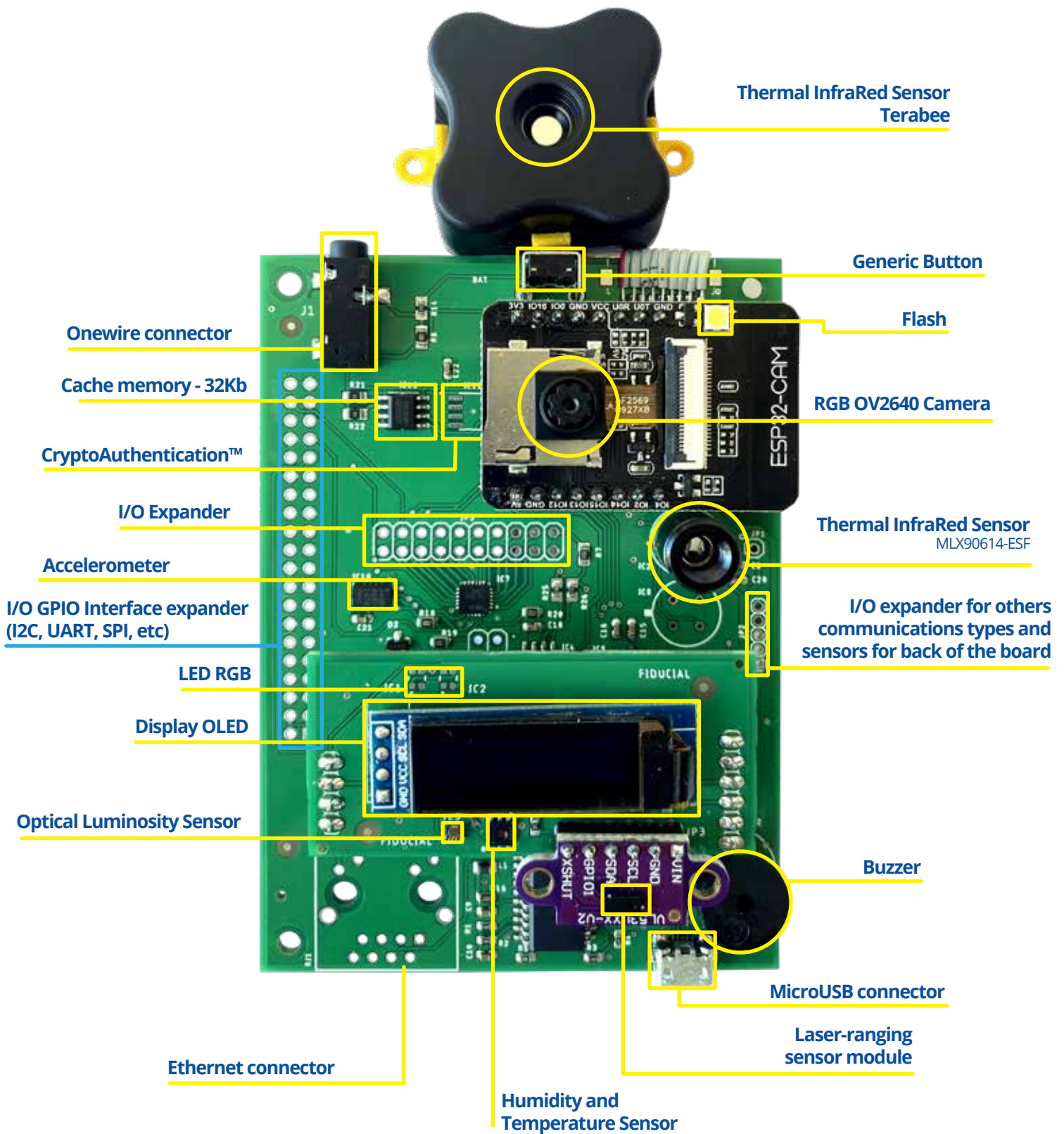
Freedom to connect and integrate everything with **Multicast Mote**

Multipurpose Open architecture platform and business model to create your IoT solution from scratch with or without support.

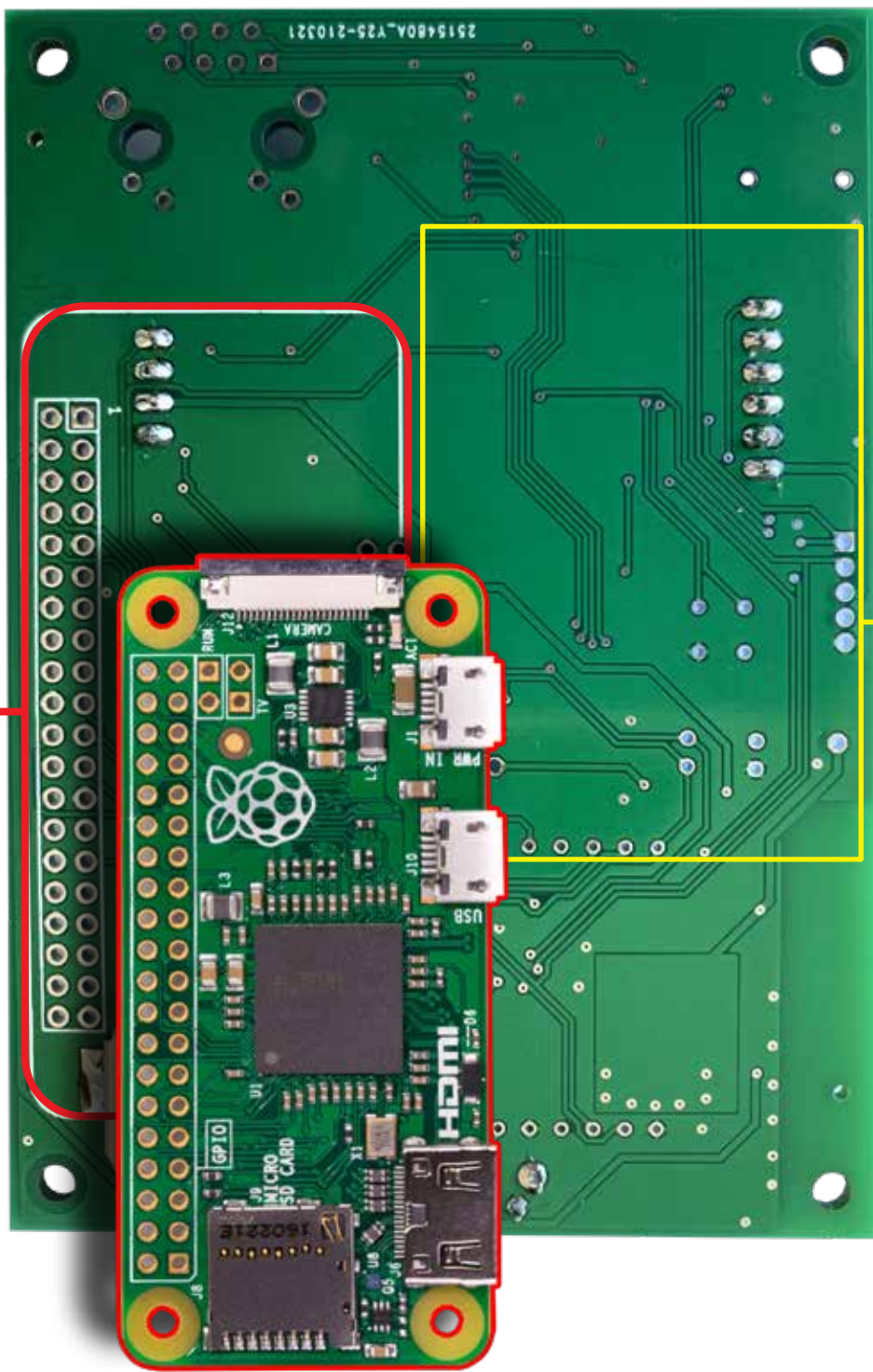
Customize the hardware platform and create your own applications even if you have little low-level programming or hardware skills.



Main board frontal view



Main board back view



Here you connect other platforms or devices. For example, Raspberry Pi Zero

Expander board modules based on Ai-Thinker for Lora, 4G LTE, GPS, etc

Components

Multicast Mote customizable components or accessory - You can add or remove it from board		
Multicast Part Number	Description	Board / Type
0001-MB21	ESP32 CAM	Main
0002-MB21	CryptoAuthentication™ 32K - based on AES Algorithm with 128-bit Keys.	Main
0003-MB21	Accelerometer X, Y, Z Axis ±2g, 4g, 8g, 16g 0.05Hz	Main
0004-MB21	Ethernet – RJ45 10/100 connector	Main
0005-MB21	Ethernet – CI 10-base-T	Main
0006-MB21	Onewire connector – Jack Stereo 3.5MM	Main
0007-MB21	Thermal InfraRed Sensor - MLX90614-ESF - High precision non-contact temperature measurements	Main
0008-DB21	Thermal InfraRed Sensor - Terabee - High precision - TR-EVO-T33-UART	Main
0001-DB21	LED RGB	Display
0002-DB21	Display OLED 128x32	Display
0003-DB21	Humidity and Temperature Sensor	Display
0004-DB21	Optical (luminosity) Sensor	Display
0005-DB21	Laser-ranging sensor module VL5310x - accurate distance measurement	Display



Multicast

+55 27 99989 1122
multicast.com.br